



# Tee Times

Volume 9, Issue 2, February 2009



## The President's View by Kristi Johnston

I can't believe 2009 is already well underway! Your Dallas EWGA Board of Directors held their annual retreat in December to begin the business plan, budgeting and master calendar for the 2009 season. We are looking forward to a great year full of awesome golf, social, education, and networking opportunities. I would like to pass on some exciting news and events to look forward to early in 2009:



- ◇ The EWGA organization has a new logo! Look for it in this newsletter and on our website.
- ◇ Register now for the 2009 EWGA Annual Conference - "Dare to Lead, Dare to Grow" - February 18 - 21, Palm Desert, California.
- ◇ The Dallas EWGA Annual Kick Off Event, The Tee Party, will be held on March 9 at Brookhaven Country Club!

Let's make 2009 a great year for the Dallas Chapter. Bring friends and prospective members to as many events as possible. Encourage new members to join and show your support by participating.

Wishing each of you a Happy New Year,  
 Kristi Johnston, President

### Inside this issue:

<i>Presidents View</i>	<b>1</b>
<i>Golf Funny</i>	
<i>Calendar of Events</i>	<b>2</b>
<i>Events and Leadership</i>	<b>3</b>
<i>Handicap</i>	<b>4</b>
<i>EWGA Dallas Sponsors</i>	<b>5</b>



### Golf One Liner:

"The secret of good golf is to hit the ball hard, straight, and NOT TOO OFTEN."

<http://forum.ottawagolf.com/showthread.php?t=9205>

# Calendar of Events



## February 2009

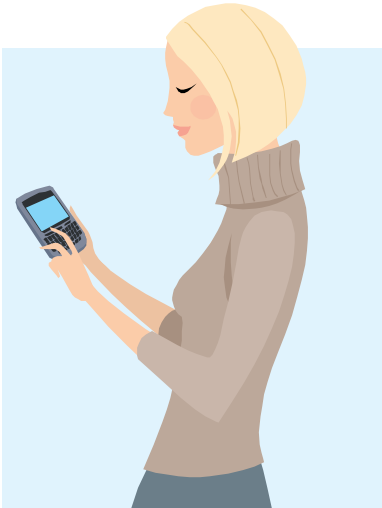
Sun	Mon	Tue	Wed	Thu	Fri	Sat
15	16	17	18	19	20	21
			<b>EWGA Conference - Palm Desert, California</b>			
22	23	24	25	26	27	28

## March 2009

Sun	Mon	Tue	Wed	Thu	Fri	Sat
1	2 <b>10 Shots with Kathy Farrer</b>	3	4	5	6 <b>10 Shots with Kathy Farrer</b>	7 <b>Beginner Golf @ DA's Take it to the Course @ Sherrill</b>
8 <b>Take it to the Course @ Sherrill</b>	9 <b>Tee Party</b>	10	11	12	13	14 <b>Beginner Golf @ DA's Take it to the Course @ Sherrill</b>
15 <b>Take it to the Course @ Sherrill</b>	16	17	18	19	20	21 <b>Beginner Golf @ DA's Take it to the Course @ Sherrill</b>
22 <b>Take it to the Course @ Sherrill</b>	23/30	24/31	25	26	27	28 <b>Indian Creek Golf Event</b>
29 <b>Take it to the Course @ Sherrill</b>	30	31	<b>Look for next month's newsletter to find details of the above education courses. Also watch out for information and RSVP details for the 1st Golf Event at Indian Creek!!</b>			

## Golf Events

### SAVE THE DATE for the Dallas EWGA 2009 TEE PARTY



Mark your calendars, Blackberries, DayTimers, and iPhones!

**Monday, March 9,** is the date for our annual Tee Party to kick off another fun and exciting season of golf! This year's event will be hosted at the Brookhaven Country Club and is an excellent chance to see old friends as well as introduce more women to the EWGA who are new, or returning, to the game of golf. Plan to attend and meet your 2009 Board of Directors, learn about our exciting schedule of education, social and golf events for 2009, talk one-on-one with our generous sponsors, bid on great packages and prizes in the silent auction and enjoy the entertainment we've lined up. Your Board is also working with Brookhaven to provide you and your guest(s) with the opportunity to play a round of golf at a great rate before we get the PARTY STARTED!! More details available soon at [www.dallasewga.com](http://www.dallasewga.com).

## Leadership

### Top 5 Reasons to Volunteer, by Angela Ellexson-Hankins

5. It's a great way to get to know the Dallas Chapter EWGA organization and how we Connect, Learn, Play and Belong.
4. Participating is a great way to focus your energy and overcome any feeling of shyness you may have, especially if you are new to the organization.
3. You will get to meet a fun group of intelligent, interesting, and talented women very quickly.
2. Getting involved is a good for you! Studies have shown people who are involved feel better in general and have lower stress levels.
1. You get the most out of your membership when you take advantage of all the opportunities to Connect, Learn, Play and Belong that the EWGA has to offer.



If you would like more information about how **you** can volunteer, please drop me an email at [leadership@dallasewga.com](mailto:leadership@dallasewga.com). You can also look for me at the next event; there is a very good chance I'll be there!

## Handicap Corner : Measure your potential!

by Tila Tuimalealiifano

---

Your USGA handicap index reflects your potential, not your scoring average.

**Upcoming Handicap Revision Dates:**

January 30

February 27

March 27

If you haven't already, please take this opportunity to **ACTIVATE your handicap account with GLMS. Please be aware that if you have a handicap index with another club, then all of your scores must be posted at all your clubs.**

Here's how:

- ◇ Go to [www.ewga.com](http://www.ewga.com)
- ◇ Click on **Handicap Service**
- ◇ Click on **Activate Handicap**. Here you will find more information on activating your membership.

Here are some quick reminders regarding your handicap index:

1. Try to make the best score at every hole in every round, regardless of where the round is played.
2. Post every acceptable round for peer review. Acceptable means that the round of golf was played in accordance with the Rules of Golf.
3. Post your adjusted gross score, which is your gross score adjusted under USGA Handicap System procedures for unfinished holes, conceded strokes, holes not played or not played under the Rules of Golf, or Equitable Stroke Control (ESC).

*If you do not have an established Handicap Index, you'll start using the maximum Handicap Index of 40.4 (for women) to convert to a Course Handicap which is then used to determine a maximum ESC number.*

4. The ESC number for a given hole is determined from your **course handicap** not your handicap index. This mandatory procedure reduces high hole scores for handicap purposes to make handicaps more representative of your potential ability.

If you have any questions related to handicap indexes, please contact Tila at [handicap@dallasewga.com](mailto:handicap@dallasewga.com).

## SPECIAL THANKS TO OUR 2008 SPONSORS



**The Texas Rangers**  
**The Tower Club**

Every year, the Dallas EWGA appreciates the sponsors who continue to support us from the previous years and we look forward to meeting new sponsors who will support our chapter.

We are very grateful to these fine sponsors. They provide us with the operating cash and prizes to make our events exciting and memorable in 2008.

For a complete list of our sponsors, please visit our website. If you are interested in sponsorship or would like more information, please contact Lynn Harris, Dallas EWGA Sponsor Chair, at

[sponsorship@dallasewga.com](mailto:sponsorship@dallasewga.com).

[www.dallasewga.com](http://www.dallasewga.com)

### Vision

"We are the premier force for promoting women's golf."

### Mission

"The EWGA exists to provide opportunities for women to learn, play and enjoy the game of golf for business and for life."

"A Driving Force...  
Women Making a Difference."

